

HSF

NOTES:

Rated Current:20 AMP
 Rated Voltage:300 V
 Contact Resistance:8 mΩ max
 Withstand Voltage:2500 V AC/DC
 Insulation Resistance:1000 MΩ min
 Operation Temperature:-40°C to +105°C
 Screw Torque:0.50 N-m
 Wire Range:30~12 AWG

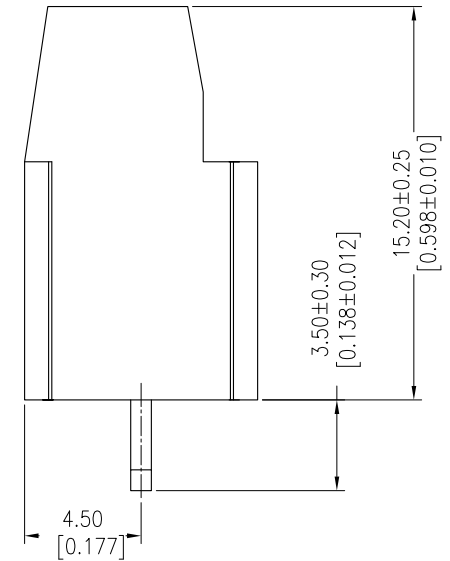
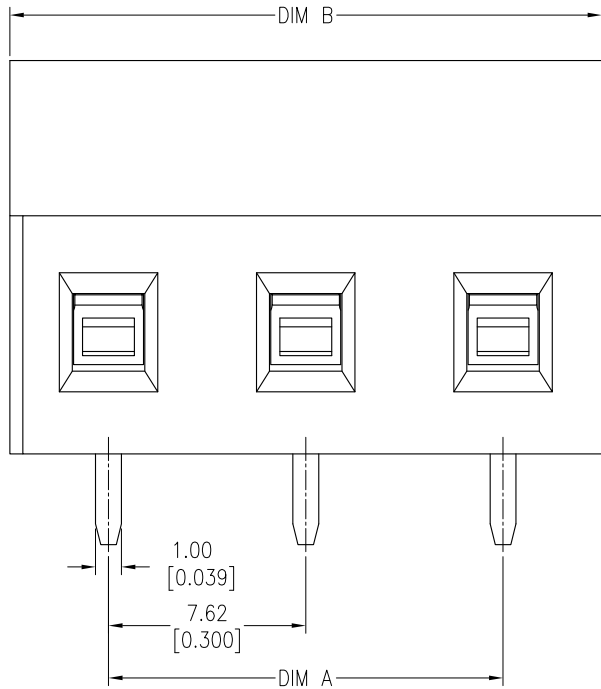
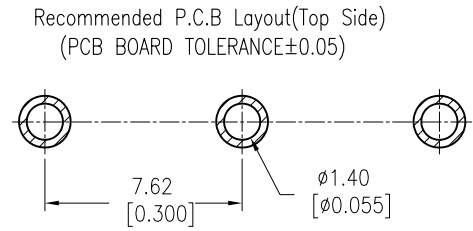
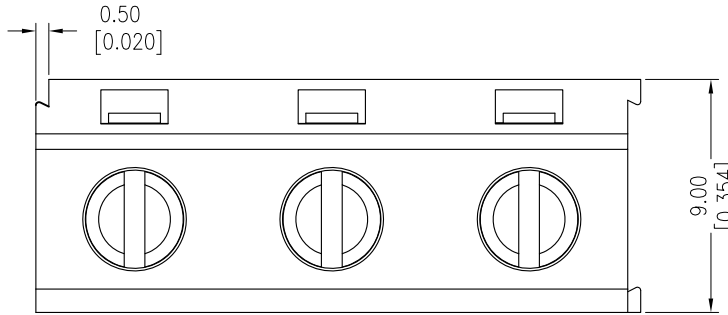
Screw Material:Steel
 Pin Block Material:Brass
 Cite Feet Material:Brass
 Cite Feet Plating:Matte Tin Plated Over Nickel
 Insulator Material:PA66 UL94 V-0

Ordering Information:

E H 762 - 152 S XX X SM 1

Pitch 762=7.62 Housing High 152=15.20 No.of Pins 02-03P Color A=Green G=Grey U=Blue Contact Plated SM=Matte Tin

3P	15.24	22.86
2P	7.62	15.24
PIN	A	B



					OPERATION	DRAW	DATE	SCALE	FIT	PART NO.
					X.X ±0.40	Tsingsn	2014/01/03	UNIT	mm	EH762-152SXXXSM1
					X.XX ±0.25	CHECK	DATE	SIZE	inch	TITLE:
					X.XXX ±0.15	APPROVE	DATE	SHEET	A4	7.62mm Pitch
A0	2014/01/03	NEW			Angle ± 3'			PROJ.	1/1	Euro Terminal Blocks
REV	DATE	MODIFICATION DESCRIPTION			DIM TOL					Customer NO.